

NOTES:
 1) FOR OPTIMAL REINFORCEMENT PLACEMENT IN THE NUDURA FORM, SPACING OF HORIZONTAL REINFORCEMENT TO BE SPECIFIED AT 18" (457mm) O.C. AND VERTICAL REINFORCEMENT TO BE SPECIFIED AT MULTIPLES OF 8" (203mm) O.C. REFER TO NUDURA REINFORCEMENT PLACEMENT DETAILS.

This detail is for general informational purposes only. The project design professional determines, in its sole discretion, whether this detail or a functionally equivalent detail is best suited for the project with respect to any architecture, engineering, and design requirements, including any local building code requirements. If this document is not reviewed and the product is not approved for use by a licensed design professional, the customer agrees that the detail may contain substantive flaws requiring correction, and hereby releases Tremco CPG Inc. from any and all liability related to the design and installation of the product. This detail is subject to change without notice. Contact Tremco to ensure you have the most recent version.

Non-Combustible Construction - Slab on Grade



Detail: Nudura 6" (152mm) Form Unit, Stem Wall at Slab on Grade, Exterior Finish as Specified, Non-Insulated		
Drawn by: NL	Checked by: KS	Scale: 1:8
Revision #: 05	Revised by: KAB	Date: 3/13/2024

File Name:
B6C01



NUDURA 6" (152mm)
STANDARD FORM UNIT

MIN. 1/2" (13mm) GYPSUM BOARD

TREMCO EXOAIR 230 OR
FUNCTIONAL EQUIVALENT

WET SET DOWELS TO MATCH
VERTICAL REINFORCEMENT
BETWEEN POURS OR AS
SPECIFIED

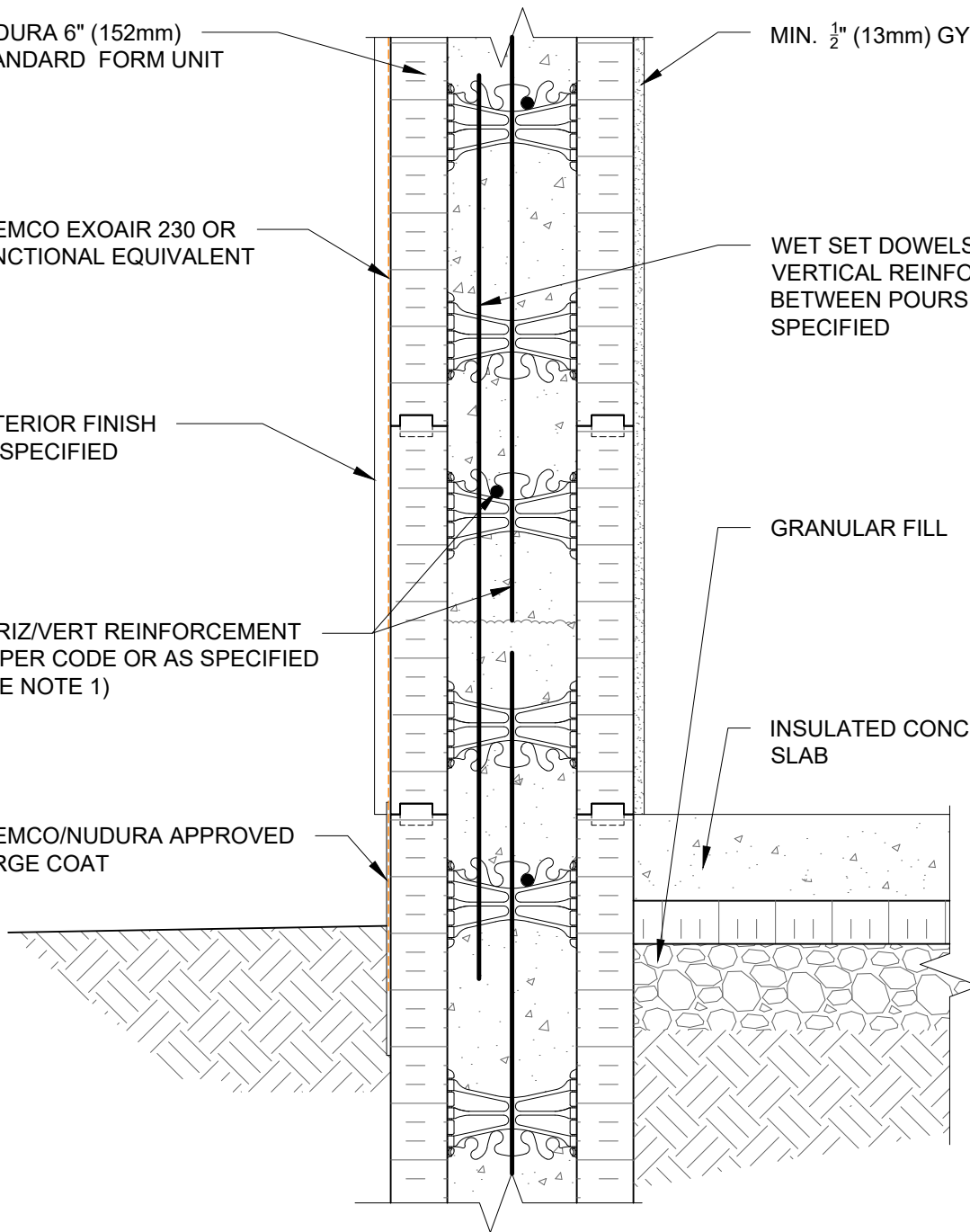
EXTERIOR FINISH
AS SPECIFIED

GRANULAR FILL

HORIZ/VERT REINFORCEMENT
AS PER CODE OR AS SPECIFIED
(SEE NOTE 1)

INSULATED CONCRETE
SLAB

TREMCO/NUDURA APPROVED
PARGE COAT



NOTES:
1) FOR OPTIMAL REINFORCEMENT PLACEMENT IN THE NUDURA FORM,
SPACING OF HORIZONTAL REINFORCEMENT TO BE SPECIFIED AT 18"
(457mm) O.C. AND VERTICAL REINFORCEMENT TO BE SPECIFIED AT
MULTIPLES OF 8" (203mm) O.C. REFER TO NUDURA REINFORCEMENT
PLACEMENT DETAILS.

This detail is for general informational purposes only. The project design professional determines, in its sole discretion, whether this detail or a functionally equivalent detail is best suited for the project with respect to any architecture, engineering, and design requirements, including any local building code requirements. If this document is not reviewed and the product is not approved for use by a licensed design professional, the customer agrees that the detail may contain substantive flaws requiring correction, and hereby releases Tremco CPG Inc. from any and all liability related to the design and installation of the product. This detail is subject to change without notice. Contact Tremco to ensure you have the most recent version.

Non-Combustible Construction - Slab on Grade

Detail: Nudura 6" (152mm) Form Unit, Stem Wall at Slab on Grade,
Exterior Finish as Specified, Insulated

File Name:

Drawn by: JN

Checked by: KS

Scale: 1:8

B6C07

Revision #: 06

Revised by: KAB

Date: 3/13/2024



Nudura Technical Support: 866-468-6299
International: +1 705-726-9499

www.tremcocpg.com



Construction Products Group

NUDURA 6" (152mm)
STANDARD FORM UNIT

MIN. 1/2" (13mm) GYPSUM BOARD

TREMCO EXOAIR 230 OR
FUNCTIONAL EQUIVALENT

WET SET DOWELS TO MATCH
VERTICAL REINFORCEMENT
BETWEEN POURS OR AS
SPECIFIED

BRICK VENEER c/w
1" (25mm) AIR SPACE
AND BRICK TIES

HORIZ/VERT REINFORCEMENT
AS PER CODE OR AS
SPECIFIED (SEE NOTE 1)

GRANULAR FILL

THROUGH WALL FLASHING
AS PER CODE OR AS
SPECIFIED

INSULATED CONCRETE
SLAB

TREMCO/NUDURA APPROVED
PARGE COAT WHERE
EXTENDED ABOVE GRADE

NUDURA 6" (152mm) BRICK
LEDGE FORM UNIT

NOTES:

1) FOR OPTIMAL REINFORCEMENT PLACEMENT IN THE NUDURA FORM, SPACING OF HORIZONTAL REINFORCEMENT TO BE SPECIFIED AT 18" (457mm) O.C. AND VERTICAL REINFORCEMENT TO BE SPECIFIED AT MULTIPLES OF 8" (203mm) O.C. REFER TO NUDURA REINFORCEMENT PLACEMENT DETAILS.

This detail is for general informational purposes only. The project design professional determines, in its sole discretion, whether this detail or a functionally equivalent detail is best suited for the project with respect to any architecture, engineering, and design requirements, including any local building code requirements. If this document is not reviewed and the product is not approved for use by a licensed design professional, the customer agrees that the detail may contain substantive flaws requiring correction, and hereby releases Tremco CPG Inc. from any and all liability related to the design and installation of the product. This detail is subject to change without notice. Contact Tremco to ensure you have the most recent version.

Non-Combustible Construction - Slab on Grade



Nudura Technical Support: 866-468-6299
International: +1 705-726-9499

Nudura 6" (152mm) Form Unit, Stem Wall at Slab on Grade,
Detail: Brick Veneer Finish, Insulated

Drawn by: TVC

Checked by: KS

Scale: 1:8

Revision #: 04

Revised by: KAB

Date: 3/13/2024

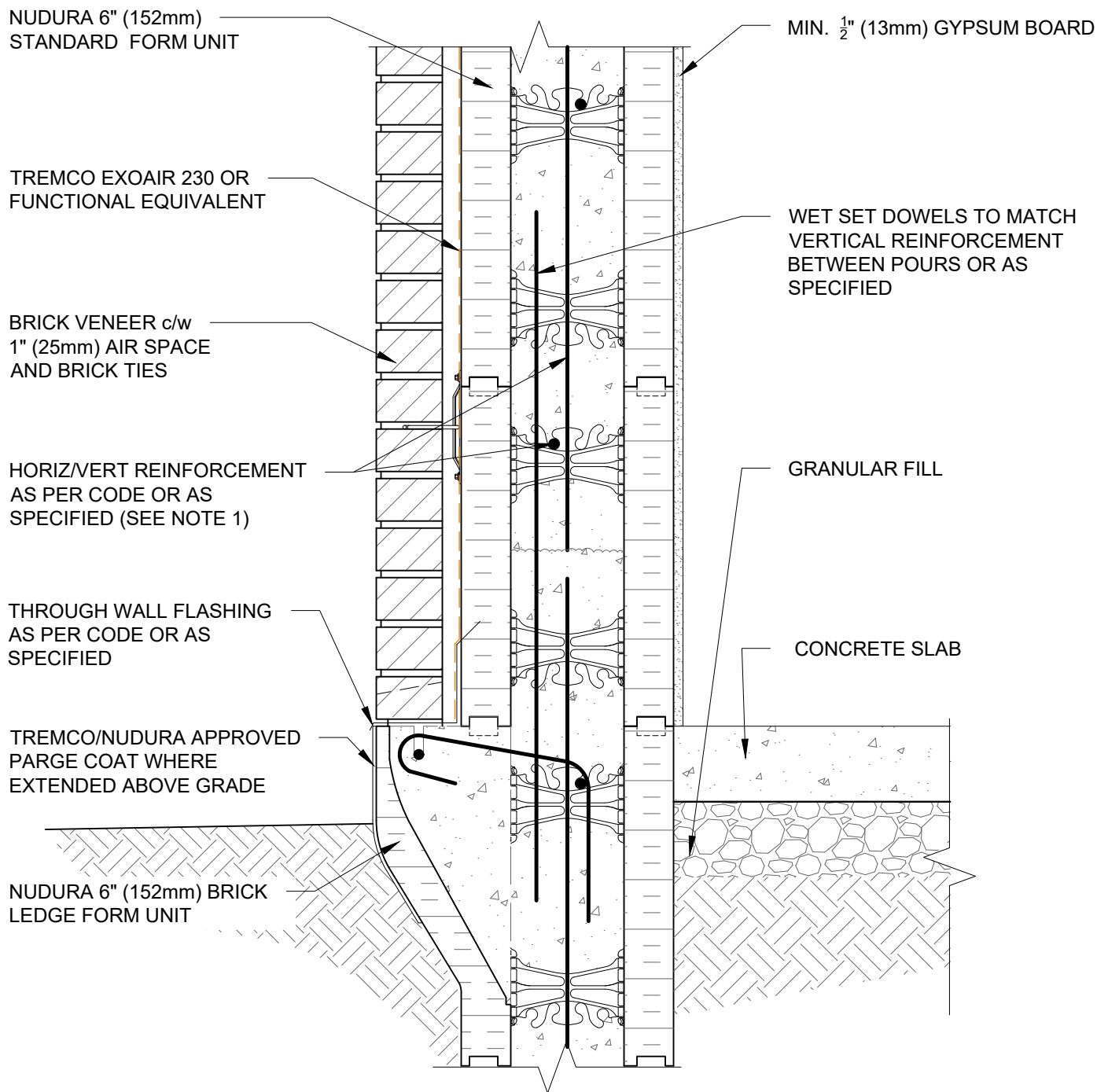
File Name:

B6C10



Construction Products Group

www.tremcocpg.com



NOTES:
 1) FOR OPTIMAL REINFORCEMENT PLACEMENT IN THE NUDURA FORM, SPACING OF HORIZONTAL REINFORCEMENT TO BE SPECIFIED AT 18" (457mm) O.C. AND VERTICAL REINFORCEMENT TO BE SPECIFIED AT MULTIPLES OF 8" (203mm) O.C. REFER TO NUDURA REINFORCEMENT PLACEMENT DETAILS.

This detail is for general informational purposes only. The project design professional determines, in its sole discretion, whether this detail or a functionally equivalent detail is best suited for the project with respect to any architecture, engineering, and design requirements, including any local building code requirements. If this document is not reviewed and the product is not approved for use by a licensed design professional, the customer agrees that the detail may contain substantive flaws requiring correction, and hereby releases Tremco CPG Inc. from any and all liability related to the design and installation of the product. This detail is subject to change without notice. Contact Tremco to ensure you have the most recent version.

Non-Combustible Construction - Slab on Grade



Nudura 6" (152mm) Form Unit, Stem Wall at Slab on Grade,
 Detail: Brick Veneer Finish, Non-Insulated

Drawn by: TVC	Checked by: KS	Scale: 1:8
Revision #: 05	Revised by: KAB	Date: 3/13/2024

File Name:

B6C11

